

Security Driven by **Intelligence.**



# 2014

## PRODUCT GUIDE

[www.computarganz.com](http://www.computarganz.com)

# Security Driven by **Intelligence**

At CBC (AMERICA) Corp., we are committed to bringing our customers the latest leading-edge technology to meet today's evolving security challenges.

We offer a comprehensive selection of video surveillance solutions for every type of application: from simple camera systems to complex multi-camera, VMS and NVR systems.

## **Our Brands:**



Ganz products encompass a comprehensive line of intelligent IP and analog video surveillance solutions.



Computar provides over 200 state-of-the-art lens products giving you the flexibility needed to get the exceptional image clarity and precise angle of view for every application.

## **Design Center:**

To further our commitment, the Ganz Design Center was developed to take the guesswork out of building a truly effective surveillance solution. From start to finish, our technical experts work directly with you to design a system that is built around your needs— with the right products, the right technology and the right level of support.

Our exceptional "VIP" level of support backs all of our products. With offices in NY, CA and Mexico City, our customer service and technical teams are available to answer questions or to assist in configuring a system with one vision—your total security.

Sincerely,

A handwritten signature in blue ink, appearing to read "T. Fujita", is written over a faint, light blue circular background.

Takeshi (Tony) Fujita  
Executive Vice President  
CBC (AMERICA) Corp.  
Imaging Technology

# CONTENTS

## ANALOG CAMERAS

Domes.....	2
PTZ.....	4
Box Cameras.....	5
Speciality & IR.....	6
Board Cameras.....	8

## THERMAL CAMERAS

Analog.....	9
Ganz Thermal IP & Analog.....	10

## IP CAMERAS

PixelPro Series with GXi Technology.....	11
PixelPro Series.....	14
Ganz Cloud.....	16

## RECORDING

GanzVision NVR Software.....	17
ZNS Series NVR Software.....	17
NVR Servers.....	18
Embedded NVRs.....	19
Mobile App & Client Software.....	19
DVRs.....	20

MONITORS.....	21
---------------	----

HOUSINGS & CAMERA KITS.....	22
-----------------------------	----

ACCESSORIES.....	24
------------------	----

LENSES.....	25
-------------	----





# CAMERAS

High Performance Domes with Integrated Varifocal Lens



WITH  
**GX5**  
TECHNOLOGY



## ZC-D5000NXA Series Domes

### 700 TVL Day/Night High Performance Domes

These high performance domes feature Ganz **GX5** technology, combining 700TVL, WDR performance, intelligent image enhancement and advanced OSD controls. With an unprecedented level of resolution, sensitivity and control for optimal video surveillance in all conditions. The OSD menu provides multiple programming options & installation tools.

- 700 TVL Ultra High Resolution
- 12,600x WDR (Wide Dynamic Range) on True WDR models
- 2.3-5mm, 2.8-12mm, 5-50mm or 8.5-40mm **computar®** integrated varifocal lens
- Extremely High Sensitivity Day/Night modes
- Automatically switches between preprogrammed profiles for best image results
- Smart Day/Night mode synchronizes with IR LED
- 2D/3D Digital Noise Reduction
- Test pattern output with color bar
- UL Listed



Go to Page 5 for  
box cameras  
featuring GX5  
Technology.

Indoor Models		ZC-D5025NXA	ZC-D5212NXA	ZC-DW5212NXA	ZC-DN5212NXA	ZC-DWN5212NXA	ZC-D5550NXA	ZC-DW5550NXA	ZC-DN5840NXA
Focal Length		2.3-5mm	2.8-12mm				5-50mm		8.5-40mm
WDR Performance		Digital WDR	Digital WDR	True WDR	Digital WDR	True WDR	Digital WDR	True WDR	Digital WDR
Day/Night Performance		Digital D/N	Digital D/N	Digital D/N	True D/N	True D/N	Digital D/N	Digital D/N	True D/N
DC Auto Iris		F1.2- F360C	F1.3 - F360C						
Image Sensor		1/3"- type Interline transfer color CCD							
Camera Resolution		700 TVL (for both Color & BW)							
Horiz. Angle of View		114.8°-56.1°	98.2° - 23.8°				51.8° - 5.6°		33.5°-7.1°
Min. Illum @ F1.3	Normal	0.27 lux Color 0.027 lux B/W	0.3 lux Color / 0.03 lux B/W		0.08 lux Color / 0.008 lux B/W		0.3 lux Color / 0.03 lux B/W		0.08 lux Color / 0.008 lux B/W
	50 IRE, SENS UP	0.000053 lux B/W	0.00006 lux B/W		0.000016 lux B/W		0.00006 lux B/W		0.000016 lux B/W
Wide Dynamic Range		-	-	Max 82dB, 12,600x	-	Max 82dB, 12,600x	-	Max 82dB, 12,600x	-
Power Source		24V AC ±10% (50/60 Hz ±1 Hz) or 12VDC ± 10, UL listed							
Power Consumption		12VDC 230mA / 24VAC 240mA, 3.0W							
Dimensions (indoor)		5.7" ø x 4.3"H / 144 mm ø x 110mm H							
Optional		Heater - ZC5X-HTR (for operating temp to -40° F)							
* Add suffix "T" for NVT module. **Pre-installed NVT transmitter provides video transmission over CAT 5/Twisted pair cable (a separate receiver is required)									

Some models also available with manual iris or in black. Contact customer service for details.

Outdoor Housing		ZC-OH5 - Optional Outdoor Housing Specifications
Housing Material		IP66 rated cast aluminum with off white powder coat finish, all stainless steel hardware
Dome Material		Impact-resistant clear polycarbonate dome with black interior liner (tinted option available)
Temp. Range w/o Heater		-20° F to 122° F w/o heater (using 5000 Series domes, based on proper installation & maintenance procedures)
Temp. Range with Heater		-40° F to 122° F w/ heater (using 5000 Series domes, based on proper installation & maintenance procedures)
Dimensions (outdoor)		6.7" $\varnothing$ x 5" H / 170mm $\varnothing$ x 127mm H

### Indoor Mounting Options



Flush Mount  
ZC-FM3



Pendant  
ZC7-PM1  
(3/4" NPT Pipe)



Wall Mount  
ZC7-WM1



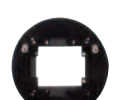
ZC-OH5  
Outdoor Housing



Pendant Mount  
Model ZC5-PM2A  
(1" NPT Pipe)



Wall Mount  
ZC5-WM2A



45 Box Adapter  
ZCA-GAP

## ZC-D8000 Series Domes

### Indoor & Outdoor High Resolution WDR Domes



The new 8000 Series domes feature a 1/3" high sensitivity digital sensor on True WDR models. Available in 690 TVL True WDR or 600 TVL digital WDR, both with a 3.3-12mm **computar**® lens. The series also includes an outdoor IR dome with 600 TVL and a 3.3-12mm **computar**® lens.

- 690 and 600 TVL models
- 1/3" High sensitivity digital sensor (True WDR models)
- 3.3-12mm **computar**® integrated varifocal lens
- Digital or True Wide Dynamic Range
- Backlight / Highlight compensation
- Multi-function switch for OSD control (N/A on IR model)
- IR model features 30 LEDS for over 100' illumination range and manual wide angle pan/tilt rotation mechanism
- Gang box mountable
- IP67 rating for all weather conditions (outdoor models)
- UL listed



With CCD



With WDR



With CCD



With WDR

Models	ZC-D8312NBA	ZC-DT8312NBA	ZC-DW8312NBA	ZC-DN8312NBA	ZC-DWNT8312NBA	ZC-DWNT8312NBA-IR	ZC-DNT8312NBA-IR
Indoor / Outdoor	Indoor 3.3-12mm	Outdoor 3.3-12mm	Indoor 3.3-12mm	Indoor 3.3-12mm	Outdoor 3.3-12mm	Outdoor 3.3-12mm <b>IR</b>	
WDR Performance	Digital WDR		True WDR	Digital WDR	True WDR		Digital WDR
Performance	Digital Day / Night			True Day / Night			
Image Sensor	1/3" Sony HAD II CCD		1/3"DPS Sensor	1/3" Sony HAD II CCD	1/3"DPS Sensor		1/3" Sony HAD II CCD
Effective Pixels	768 (H) x 494 (V)		758 (H) x 540 (V)	768 (H) x 494 (V)	758 (H) x 540 (V)		768 (H) x 494 (V)
Horizontal Resolution	600 TVL		690 TVL	600 TVL	690 TVL		600 TVL
Minimum Illumination	0.4 lux / F1.4 (50 IRE)			0.04 lux / F1.4 (50 IRE)			0 lux (IR LED ON)
Lens	3.3-12mm, F1.4 Auto-iris						
Power Supply	24V AC ± 10% 60Hz ± 1Hz / 12V DC ± 10%, UL listed						
Power Consumption	2.5W (24VAC), 1.8W (12VDC)		2.9W (24VAC), 2.6W (12VDC)	2.5W (24VAC), 1.8W (12VDC)	2.9W (24VAC), 2.6W (12VDC)	5.5W (24VAC) 6.2W (12VDC)	
Operating Temp.	14° F ~ 122° F (-10° C ~ 50° C)	-4° F ~ 122° F (-20° C ~ 50° C)	14° F ~ 122° F (-10° C ~ 50° C)		-4° F ~ 122° F (-20° C ~ 50° C)		
IP Rating	-	IP67	-		IP67		
External Dimensions	4.7" Ø x 4.3"	5.8" Ø x 5.0" H	4.7" Ø x 4.3" H		5.8" Ø x 5.0" H		

### Indoor Mounting Options



**Flush Mount**  
ZC-FM3



**Pendant Mount**  
ZC7-PM1  
(3/4" NPT Pipe)



**Wall Mount**  
ZC7-WM1



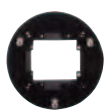
**Flush Mount**  
ZC8-FM2



**Pendant Mount**  
ZC8-PM2  
(3/4" NPT Pipe)



**Wall Mount**  
ZC8-WM2A



**4S Box Adapter**  
ZCA-GAP

### Outdoor/Impact-Resistant Mounting Options & Accessories

# ANALOG CAMERAS

## Indoor and Outdoor PTZ Cameras



Wall mount standard on outdoor models  
Pole mount and corner adapter also available



PT112N-XT 12x Outdoor

## PT100 PTZ Dome Series

### 12x and 27x Vandal Resistant PTZ Domes

- True Day/Night operation on all models
- Fast maximum panning speed (360° sec)
- 4 pattern, 8 swing, 8 group functions
- Pelco P & D Protocol
- Wall mount standard on outdoor models
- Multiple mounting options available

Models	PT112N	PT112N-XT	PT127N	PT127N-XT
Type	Indoor	Outdoor	Indoor	Outdoor
Resolution	500 TVL Color / 570 TVL B/W		550 TVL Color/ 570 TVL B/W	
Sensitivity	0.7 lux Color / 0.02 lux B/W / 50 IRE		0.4 lux Color / 0.02 lux B/W / 50 IRE	
Zoom	12x optical 10x digital		27x optical & 12x digital	
Mount	Surface	Wall Mount	Surface	Wall Mount
Power	24VAC			
Dimensions	5.8" Ø x 5.6" H	7" Ø x 7.8" H	6.3" Ø x 8.3" H	11.5" Ø x 11" H
Sunshield	-	PT-SS	-	included

### Indoor Mounting Options (for PT127N)

Pendant Mount Kit  
PMK4  
(1" NPT Pipe)



Flush Mount Kit  
FMK4



### Indoor Mounting Options (for PT112N)

Indoor Pendant  
PMK3



Indoor Wall  
WMK3



Indoor Flush  
FMK3



## PT200 PTZ Dome Series

### Outdoor 22x and 36x PTZ Domes

- 0.01 lux low-light frame integration feature (36X model)
- 360° continuous pan rotation plus auto-flip feature
- Programmable presets, patrol tours, auto pan, cruise tour & auto home return
- Privacy zones, zone titles, scheduling, advanced alarm-handling & built-in multi-protocols



23x shown with  
Pendant Mount ZCA-PMA-Q

Models	ZC-PT222N-XT	ZC-PT236N-XT
Resolution	480 TVL	650 TVL
Zoom	22x	36x WDR
Performance	Digital Day/Night	True Day/Night
Type	Outdoor - IP66	
Power	24 VAC	
Dimensions	7.5" Ø x 11.9"H	

### Mounting Options



Outdoor Parapet  
ZCA-PPT



Outdoor Wall  
ZCA-GT100

Multiple Mounting options & accessories available on our online catalog. PTZ controllers on page 24.

## IR PTZ Dome

### 360° Endless Pan/Tilt IR PTZ Dome with 36x Zoom

- 0°-360° endless pan & 0°-360° tilt motion for recording at any angle
- WDR and Digital noise reduction
- Smart IR LED for range up to 200 feet
- Auto LED brightness control
- Pelco P & D Protocol



IP68 for Extreme  
Outdoor Performance

Model	ZC-PT336N-IR
Resolution	550TVL
Zoom	36x Optical Zoom/ 12x Digital Zoom
Performance	True Day/Night
Power Input	24 VAC
Dimensions	11.8" W x 6.9" H x 7.9" D



Shown with optional  
ZCA-PM3 Mount.

Additional accessories available online.

Thermal models also available.

## YCX-05 Series

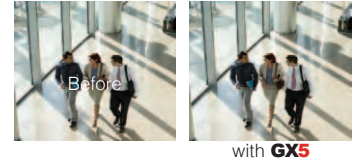
### High Performance 700 TVL, Wide Dynamic Range Cameras



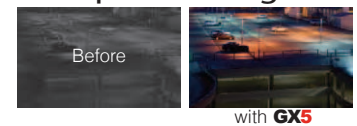
These high performance cameras feature Ganz **GX5** technology, combining 700TVL, WDR performance, intelligent image enhancement and advanced OSD controls. They deliver an unprecedented level of resolution, sensitivity and control for optimal video surveillance in all conditions. The OSD menu provides multiple programming options and installation tools.

- 700 TVL Super High Resolution
- 12,600x WDR on True WDR models
- Extremely High Sensitivity Day/Night modes
- Super Low Light Performance
- Automatically switches between preprogrammed profiles for best image results
- Smart Day/Night mode synchronizes with IR LED
- 2D/3D Digital Noise Reduction
- Test pattern output with color bar
- UL Listed

### Exceptional WDR



### Super Low Light



### Fine Black Correction



Available pre-installed in Pro-Pak Kits.  
See page 22 for more details.

Models		YCX-05W	YCX-05WN	YCX-05N	YCX-05
WDR Performance		True WDR		Digital WDR	
Performance		Digital Day/Night	True Day/Night		Digital Day/Night
Camera Resolution		700 TVL (For both Color & BW)			
Minimum Illumination @ F1.2	Normal	0.3 lux Color 0.03 lux B/W	0.07 lux Color 0.007 lux B/W		0.3 lux Color 0.03 lux B/W
	50 IRE, SENS UP	0.00006 lux B/W	0.000015 lux B/W		
Power - UL listed		12VDC 310mA / 24VAC 250mA, 3.7W			
Dimensions		2.4" W x 2.1" H x 4.7"L			

## YCB-08

### 600 TVL Color Day/Night Camera

- 600 TVL
- Digital Day/Night
- Built in Digital WDR Function
- Built in DNR Function (2D)
- Low Power Consumption
- Multi-Function switch for OSD Control
- Preassembled kits available



Model	YCB-08
Resolution	600 TVL
Sensitivity	0.4 lux @ F1.4
Performance	Digital Day/Night
Power	24VAC/12VDC
Dimensions	2.4"W x 2"H x 3.8"L

Available pre-installed in Pro-Pak Kits.  
See page 22 or go to our online catalog for details.



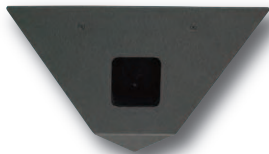
Gang box not included

## In Wall Camera Kits

### Digital Day/Night Gang Box Camera Kits

- 690 TVL WDR and 600TVL
- 3.6mm lens
- Tamper-Resistant Mounting Screws
- Silver, white & ivory faceplates included
- Clear and tinted windows included
- Fits most single gang electrical boxes

Models	GBK-36W	GBK-36
Resolution	690 TVL	600TVL
Sensitivity	0.1 lux @ F1.2	
Lens	3.6mm	
Performance	True WDR	-
Power	12VDC	
Dimensions	3.8"H x 3.6"W x 12"L	



Custom faceplate colors available.

## Corner Mount Camera

### 600 TVL Corner Mount Camera

- 600 TVL Color Day/Night Camera
- Tamper resistant design
- Interchangeable clear & tinted windows included
- Standard super wide 2.5mm lens (other lens options available)
- White and silver faceplate options available

Model	CMC-25
Resolution	600 TVL
Sensitivity	0.1 lux
Lens	2.5mm Super Wide Angle
Performance	Digital Day/Night
Power	12VDC
Dimensions	5.5"H x 9.4"W x 4.6"L



## Door Frame Camera

### 700 TVL Wide Angle Color Camera

- 700 TVL with 3.7mm wide angle lens
- Fits most standard door frames
- Durable aluminum construction
- Curved surface with 180° camera adjustment
- 12VDC (24VAC optional)

Models	DFW-37	DFB-37	DFS-37
Resolution	700 TVL		
Sensitivity	0.1 lux / F2.0		
Lens	3.7mm (74° HFOV)		
Power	12VDC (24VAC optional)		
Dimensions	1.7" W x 1.4" D x 4" H (24VAC 6" H)		
Color	White	Black	Silver



## Height Strip Camera

### 700 TVL Color Camera with Highly Visible Height Levels

- 700 TVL with 3.7mm wide angle lens
- Holds up to 3 cameras
- Redesigned for easy installation
- Fits most standard door frames
- Durable aluminum construction
- Curved surface with 180° camera adjustment
- 1 onboard camera included

Model	HSW-H37	HSB-H37	HSS-H37
Resolution	700 TVL		
Sensitivity	0.1 lux / F2.0		
Lens	3.7mm (74° HFOV)		
Performance	Digital Day/Night		
Power	12VDC (24VAC optional)		
Dimensions	1.7" W x 1.4" D x 34.1" H		
CAM-HS37	Optional Camera w/ 3.7mm lens		
Color	White	Black	Silver



## IR Varifocal Series

### Outdoor Day/Night IR Cameras



ZC-BNX8312NBA with external zoom & focus adjustment

These outdoor day/night IR cameras feature all weather housing with a feed-through mounting bracket.

- 3.3-12mm **computar**® IR varifocal lens
- IR LEDs provide up to 100' of illumination
- IP 67 rated for all weather conditions
- External zoom and focus adjustment (BNX model)

Models	BCH-IR312NA-II	ZC-BNX8312NBA
Resolution	540 TVL	600 TVL
Performance	True Day/Night	
Sensitivity	0.00 lux (IR on)	
IR LEDs	up to 100'	
Power	24VAC/12VDC	
Dimensions	5.5" x 3.6" Ø w/o bracket	

## BCH-IR3.6N

### Outdoor Day/Night IR Cameras



- 520 TVL
- 24 IR LEDs provide up to 50' illumination
- 3.6mm fixed wide angle lens
- Ultra compact design
- Adjustable mounting bracket

Models	BCH-IR3.6N-II
Resolution	520 TVL
Performance	Digital Day/Night
Sensitivity	0.00 lux (IR on)
IR LEDs	24 LEDs for up to 24'
Power	12VDC
Dimensions	3.1" x 2.6" Ø w/o bracket

## MDC-IR Series

### Outdoor IR Mini Domes



- 420 TVL or 540 TVL
- 3.6mm lens with auto-electronic shutter
- Tamper-resistant and compact (3.7" Ø)
- 24 IR LEDs provide up to 60' of illumination
- IP66 rated

Models	MDC-IR3.6N	MDCH-IR3.6N
Resolution	420 TVL	540 TVL
Performance	Digital Day/Night	
Sensitivity	0.1 lux B/W 0.00 lux (IR on)	0.3 lux B/W 0.00 lux (IR on)
Power	12VDC	
Dimensions	3.7" Ø x 3.2" H	

## DCB-39

### Indoor Color Varifocal Dome



- 600 TVL resolution
- 3-9mm **computar**® AI varifocal lens
- 3-axis manual pan/tilt rotation bracket
- Digital Wide Dynamic Range
- Multi-function Tact switch for OSD control
- Indoor 4S Gang box mountable
- Also Available In Black

Model	DCB-39
Resolution	600 TVL
Sensitivity	0.4 lux @ F1.2
Performance	Digital Day/Night
Power	12VDC / 24VAC
Dimensions	4.7" Ø x 4.3" H

## MDC Series

### Indoor Color Mini Domes

**GANZ** **VL** VALUE SERIES



The compact size of the MD Series domes makes them ideal for discreet installation and wide range of surveillance applications.

- 330 or 480 TVL resolution
- 3.6mm wide angle lens
- Ceiling mount
- Compact 3.7" size

Models	MDC-3.6N	MDCH-3.6N
Resolution	330 TVL	480 TVL
Sensitivity	1.6 lux @ F2.0	3.0 lux @ F2.0
Performance	Digital Day/Night	
Power	12VDC	
Dimensions	3.7" Ø x 2.8" H	



## LPR Camera

### 600 TVL B/W License Plate Recognition IR Camera

- 24-hour plate capture
- Captures plates at speeds of up to 31mph
- Captures plates at range up to 60'
- No sunlight or headlight glare
- No motion blur
- Stylish, compact all-in-one unit
- IP67 for all weather conditions

Model	LPC632	LPC1260
Resolution	600 TVL	
Sensitivity	0 lux	
Lens	16mm	35mm
IR Lights	850nm (Hi-Power LED)	
Range	6-32'	12-60'
Power	24VDC/24VAC	
Dimensions	3.8" H x 3.6" W x 6.7" L (w/o bracket)	

## MCB Series

### High Resolution Mini Cameras

- 600 TVL and 700 TVL models
- Sony SuperHAD CCD
- Extreme low light sensitivity
- 12VDC
- Suitable for small enclosures & short viewing distances (i.e. ATM machines)

Models	MCWB-312NA	MCWB-2.9N	MCB-3.7P
Resolution	600 TVL		700 TVL
Sensitivity	0.05 lux / 0.0001 lux BW (F1.2)	0.1 lux (F1.2)	0.1 lux (F2.0)
Lens	3.3-12mm	2.9mm	3.7mm Conical Pinhole Lens
Performance	True WDR		Digital WDR
Power	12VDC		
Dimensions	1.6" x 1.4" x 3.5"	1.4" x 1.6" x 2.4"	1" x 1" x 0.7"



## CMB/DMB Series

### 600 TVL True and Digital Day/Night Color Board Cameras

- 1/3" SONY Super HAD-II CCD
- Digital WDR (Wide Dynamic Range)
- Backlight & Highlight Compensation
- Motion Detection
- 2D Digital Noise Reduction (2DNR)
- Lens Shading Compensation
- Multi Function Switch for OSD control
- Privacy Masking
- 1.7" x 1.7" (without lens)
- 12 VDC



Fixed Lens CMB



Varifocal Lens CMB/DMB

Models	Lens	Performance	Resolution	Sensitivity	Shutter Speed	Voltage
CMB712-CS	No Lens	Digital D/N	600 TVL	0.4 lux @F1.4	1/60-1/100,000	12VDC
CMB712-L25	2.5mm	Digital D/N	600 TVL	0.4 lux @F1.4	1/60-1/100,000	12VDC
CMB712-L38	3.8mm	Digital D/N	600 TVL	0.4 lux @F1.4	1/60-1/100,000	12VDC
CMB712-L60	6.0mm	Digital D/N	600 TVL	0.4 lux @F1.4	1/60-1/100,000	12VDC
CMB712-V26A	2-6mm	Digital D/N	600 TVL	0.4 lux @F1.4	1/60-1/100,000	12VDC
CMB712-V312A	3.3-12mm	Digital D/N	600 TVL	0.4 lux @F1.4	1/60-1/100,000	12VDC
DMB112-V312A	3.3-12mm	True D/N	600 TVL	0.04 lux @F1.4	1/50-1/100,000	12VDC

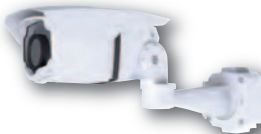
# Analog Thermal Cameras

## High Performance Thermal Cameras

The high performance ZT Series cameras are ideal for high-end security applications including perimeter surveillance, search and rescue, marine/port security, border patrol, electrical inspection & energy conservation.



ZT-M Thermal Module



ZT-W320 Weatherproof Thermal with built-in mount

- High Resolution, High Sensitivity (40mK NETD)
- Extended Microbolometer Thermal Imaging Technology
- Built-in TEC (Thermo Electric Cooler)

Models	ZT-M320	ZT-M335	ZT-W320
Description	Indoor Module (no housing)		Weatherproof IP66 Housing
Sensor	25µm, Uncooled Microbolometer		
Pixels (H x V)	384 x 288		
Wavelength	8 ~14µm		
NETD	40mK / F1.0		
Resolution	D1 Class with Original Scaling Technology		
Lens	20mm	35mm	20mm
Power	12VDC		
Dimensions	2.1"W x 2.3"H x 2.4"D (no lens)		5.7"W x 4.3"H x 11.2"D
Additional	Single thermal module designed to be embedded in your own housing		Weatherproof housing with built-in wall mount and sunshield

## Extreme High Performance Thermal and Dual Thermal & Visible

- Rugged 0°-360° endless pan & 0°-360° tilt motion for recording at any angle.
- Designed for extreme outdoor performance
- Certified for 1,000 Hours of Salt Water Spray Testing and 3G Vibration Performance



ZT-PTS 360° PT Model  
(shown with optional pole mount stand)



ZT-PTD Dual Head  
Thermal/HD Analog Camera

Models		ZT-PTS320	ZT-PTD320	ZT-PTD320-HD
Description		360° P/T Single Thermal Camera	360° P/T Dual Cameras - Thermal & Visible	360° P/T Dual Cameras Thermal & HD Visible
Thermal Camera	Sensor	25µm, Uncooled Microbolometer		
	Pixels	384 x 288 (H x V)		
	Wavelength	8 ~14µm		
	NETD	40mK / F1.0		
	Resolution	D1 Class with Original Scaling Technology		
	Lens	20mm		
Analog	Sensor	-	1/4" Sony EXview HAD CCD	1/2.8" Sony EXmor CMOS
	Resolution	-	550TVL	1080P
	Lens	-	36 - F1.6, 4.5~122.4mm (Digital x12 / Total x432)	x20 - F1.6, 3.5~94mm
Power		24VAC/12VDC		
Additional		Rugged IP68 Outdoor Housing		

# THERMAL CAMERAS

Thermal Cameras with IP and Analog Output



Fixed Thermal ZN6-H Series



P/T Thermal ZN6-P Series

## GANZ Thermal Cameras

### Outdoor Fixed and Pan/Tilt Thermal Imaging Systems

The high performance Ganz Thermal Imaging Cameras capture high-quality video in all lighting conditions. The cost-effective IP and analog thermal solutions outperform conventional surveillance technologies and are ideal for even the most challenging surveillance environments. Made in the USA.

- Thermal imaging powered by **DRS Technologies**
- Fixed and Pan / Tilt configurations
- 320 x 240 or 640 x 480 resolution
- Lens options ranging from 9° to 44° FOV
- Image Contrast Enhancement (ICE) features
- 30 fps or 9 fps versions for global commercial applications
- IP and Analog connectivity
- ONVIF™ Profile S compliant
- 24/7 operation in all weather & lighting conditions
- IP66 rating for all weather conditions

Models	ZN6-H Series - Fixed	ZN6-P Series - Pan/Tilt
Array Size	320 x 240 or 640 x 480	
Detector Type	DRS Technologies Uncooled VOx Microbolometer	
Detector Pitch	17µm	
Spectral Response	8 ~ 14µm (LWIR)	
Sensitivity	< 50mK / F1.0	
Thermal Image Display	White Hot / Black Hot / Color Palette with more than 12 options	
Image Orientation	Normal / Flip	
Frame Rate	Configurable up to 30fps or Fixed at 9fps	
Zoom	4x Digital Zoom with ePan / eTilt	
Pan Range (Azimuth)	-	Continuous 360°
Tilt Range (Elevation)	-	±120°
Pan/Tilt Speed	-	30° per second
Pan/Tilt Accuracy	-	±2.5°
Interfaces	Internet Protocol (IP): Ethernet (10/100 BaseT), RJ-45 Analog: RS-485	
Power / Consumption	12-24VDC, 24VAC, PoE / <12.95W, UL Listed	
Dimensions	11.5"L x 4.1"H x 3.7"W 29.2 x 10.4 x 9.5cm	7.9"D x 10.6"H 20 x 27cm
Weight	< 3.3 lbs. (1500g)	< 6.6 lbs. (3kg)

Additional information on lens options and environmental testing data can be found at [www.computarganz.com](http://www.computarganz.com).  
The commodities described herein may require U.S. Government authorization prior to export or re-export.

### Fixed Mounting Options



WB-1W Wall Mount



JB-1W Ceiling "J" Bracket

### P/T Mounting Option



WMK3-1W Wall Mount

See online catalog for additional mounting options.



NEW



(ZNS-Follow-1, ZNS-Track-1)



Vehicle and People Counting  
(ZNS-COUNT-1, ZNS-ACCESS-1,  
ZNS-PRO-1, ZNS-ADVANCED-1)

## GXi Imbedded Intelligence

### GXi Technology Imbedded Content Analysis License Options

A new family of cameras has been added to the PixelPro Series featuring GXi Technology maximizing the camera's surveillance capabilities. GXi's Imbedded Intelligence provides analysis of video to the PixelPro with GXi camera series utilizing advanced image-processing algorithms for a proactive approach to security management. The result is actionable intelligence in real-time, tailored to your specific security requirements. Cameras on page 12.

#### More than 16 intelligent features including:

- Intrusion Detection
- Dwell Detection
- Directional Detection
- Abandoned Object Detection
- Removed Object Detection
- Tailgating Detection
- Object Classification
- Object Counting

#### GXi Technology's Imbedded Intelligence standard and optional content analysis licenses:

GXi TECHNOLOGY	Imbedded Intelligence Features	Number of detection zones or lines	Tamper detect	Camera shake elimination	Surveillance tracker	Presence filter	Full filter set + abandoned and removed object	Class and speed filters + calibration	Direction & dwell filters	Tailgating filter	On-screen counters	Object Meta data	People tracker	Counting Line	Color Filter	PTZ Auto-tracking
----------------	--------------------------------	------------------------------------	---------------	--------------------------	----------------------	-----------------	--	---------------------------------------	---------------------------	-------------------	--------------------	------------------	----------------	---------------	--------------	-------------------

#### Inclusive licenses – included with hardware

ZNS-PRES1	Free	1	●	●	●	●										
ZNS-PRES	Free	40	◆◆	◆◆	◆◆	◆◆										

#### Lower cost special function licenses

ZNS-COUNT-1		40	◆◆								◆◆			◆◆		
ZNS-ACCESS-1		40	◆◆							◆◆	◆◆			◆◆		
ZNS-DETECT-1		40	◆◆	●	◆◆	◆◆		◆◆	◆◆							
ZNS-FOLLOW-1		0	●	●	●											●

#### Full Licenses

ZNS-SURV-1		40	◆◆	●	◆◆	◆◆	◆◆ <sup>1</sup>	◆◆	◆◆	◆◆	◆◆					
ZNS-PRO-1		40	●	●	●	●	●	●	●	●	●	●	●	●	●	
ZNS-ADVANCED-1		40	◆◆	●	◆◆	◆◆	◆◆ <sup>1</sup>	◆◆	◆◆	◆◆	◆◆			◆◆		
ZNS-TRACK-1		40	●	●	●	●	●	●	●	●	●					●

#### Add on functions

ZNS-STB-1	Embedded video stabilization	●
ZNS-FIRE& SMOKE-1	Smoke and fire detection	●

● = ZN-xxV series(V, Vx, Vxx)  
ZN-Rx/Zsx

◆ = ZN-xxXE series  
ZN1-xx

<sup>1</sup> = Except abandoned/removed object

# NETWORK VIDEO DEVICES

PixelPro IP Cameras with GXi Technology



Coming Soon



## Indoor IP Cube Camera

PixelPro Indoor Wireless Cube with GXi Technology

- 720p HD resolution
- Wireless N Connectivity (IEEE 802.11n)
- PIR sensor and I/O Terminal
- Privacy Shutter
- Imbedded Intelligence Technology for analysis of video
- Edge video recording to SD Card
- WDR tone mapping

Models	Features	Resolution	Lens	Day/Night	Power
ZN1-Q3FN2	Built-in microphone & speaker, privacy shutter, PIR sensor	720p	2.7mm	Digital D/N	12VDC

## IP Box Cameras

PixelPro IP Box Cameras with GXi Technology

- 1080p and D1 models
- Compatible with Computar CS MT lenses
- Dual Streaming Video
- Imbedded Intelligence Technology for analysis of video
- Edge video recording to SD Card
- WDR tone mapping

Models	Features	Resolution	Day/Night	Power
ZN-NH22XE	CS mount, WDR, Two-way audio, ONVIF profile (S)	1080p	True D/N	12VDC/PoE
ZN-NH11VNE	CS mount, Two-way audio	D1	True D/N	12VDC/PoE

## Indoor IP Domes

Indoor IP Domes with GXi Technology

- 1080p and VGA resolution
- Dual Streaming Video
- **ProSet** Remote Zoom & Focus (ZN-DN312XE-M)
- Imbedded Intelligence Technology for analysis of video
- Edge video recording to SD Card
- WDR tone mapping (select models)

Models	Features	Resolution	Lens	Day/ Night	Power
ZN-DN312XE-M	<b>ProSet</b> Remote Zoom & Focus, WDR, ONVIF (S)	1080p	3-9mm	True D/N	12VDC/PoE
ZN1-D4FN5	WDR, ONVIF (S)	1080p	4mm	Digital D/N	12VDC/PoE
ZN1-M4FN3	Ultra compact mini dome, WDR, ONVIF profile (S)	1080p	2.8mm	Digital D/N	PoE
ZN-D100VE	Two-way audio	VGA	3.6mm	Digital D/N	12VDC

## IP Bullet Cameras

PixelPro IP Bullet Cameras with GXi Technology

- 1080p HD Resolution
- Dual Streaming Video
- **ProSet** Remote Zoom & Focus (ZN-BT662XE-MIR)
- Imbedded Intelligence Technology for analysis of video
- Edge video recording to SD Card
- WDR tone mapping

Model	Features	Resolution	Lens	Day/Night	Power
ZN1-N4NFN6	Mini bullet WDR, 8 Built-in IR LEDs, IP66, ONVIF profile (S)	1080p	4.3mm	True D/N	PoE
ZN-BT662XE-MIR	<b>ProSet</b> Remote Zoom & Focus, WDR, 34 IR LEDs, IP66, ONVIF profile (S)	1080p	3-9mm	True D/N	12VDC/PoE

Go to [www.computarganz.com](http://www.computarganz.com) for compatible mounting accessories. Video server ZN-S1000VNE on page 24



(ZN1-N4NFN6)





## Outdoor IP Domes

### PixelPro Outdoor IP Domes with GXi Technology

- 1080p HD resolution
- Dual Streaming Video
- **ProSet** Remote Zoom & Focus (ZN-DNT352XE-MIR)
- Imbedded Intelligence Technology for analysis of video
- Edge video recording to SD Card
- WDR tone mapping

Models	Features	Resolution	Lens	Day/Night	Power
ZN-DNT352XE-MIR	<b>ProSet</b> Remote Zoom & Focus, WDR, 36 IR LEDs, IP66, ONVIF profile (S)	1080p	3-9mm	True D/N	12VDC/PoE
ZN-DNT352XE	WDR, IP66, ONVIF profile (S)	1080p	3-9mm	True D/N	12VDC/PoE



Coming Soon

## Repositionable IP Domes

### PixelPro Repositional IP Domes with GXi Technology

- 1080p HD resolution
- Dual Streaming Video
- Remote P/T & zoom (3x optical) control
- Preset Positions
- **ProSet** Remote Zoom & Focus
- Imbedded Intelligence Technology for analysis of video
- Edge video recording to SD Card
- WDR tone mapping

Models	Features	Resolution	Lens	Day/Night	Power
ZN-DN332XE-MPD	Indoor, <b>ProSet</b> Remote Zoom & Focus, Optical 3x	1080p	3-9mm	True D/N	12VDC/24VAC/PoE
ZN-DNT372XE-MPD	Outdoor, <b>ProSet</b> Remote Zoom & Focus, Optical 3x				

## IP PTZ Domes

### PixelPro IP PTZ Domes with GXi Technology

- 1080p and D1 models
- Dual Streaming Video
- Built-in auto-tracking license
- Vandal proof, IP66 (outdoor models)
- Imbedded Intelligence Technology for analysis of video
- Edge video recording to SD Card
- WDR tone mapping (ZN-NH22XE)

Indoor Models	Features	Resolution	Lens	Day/Night	Power
ZN-PTZ202XE	Indoor, WDR, 20X PTZ, 20X Optical 8X Digital Zoom (selectable), Leading-edge P/T for preset accuracy, ONVIF profile (S).	1080p	4.45-89mm	True D/N	24VAC/PoE
ZN-PTZW36VN	Indoor, WDR, up to 432X PTZ, 36X Optical 12X Digital Zoom (selectable), Pan/Tilt speed control while zooming.	D1	3.4-122.4mm	True D/N	24VAC

Outdoor Models	Features	Resolution	Lens	Day/Night	Power
ZN-PTZ12VN-XT	Outdoor, WDR, up to 192X PTZ, 12X Optical 16X Digital Zoom (selectable), Pan/Tilt speed control while zooming, IP66	D1	3.9-46.1mm	True D/N	12VDC
ZN-PTZ202XE-XT	Outdoor, WDR, 20X PTZ, 20X Optical 8X Digital Zoom (Selectable), leading-edge P/T for preset accuracy, IP66, ONVIF profile (S), IP66.	1080p	4.5-89mm	True D/N	24VAC/PoE

Go to [www.computarganz.com](http://www.computarganz.com) for compatible mounting accessories. Video server ZN-S1000VNE on page 24

# NETWORK VIDEO DEVICES

## PixelPro H.264 IP Cameras



Indoor Mini Camera  
5x Zoom, Auto Focus

**NEW**



Indoor & Outdoor Mini Domes

## Mini IP Cameras

### PixelPro Mini Outdoor Vandal, Indoor IP Dome & Mini Autofocus

- 1080p HD Resolution
- 1/2.8" Progressive Scan CMOS
- Dual Streaming Video
- Service Monitor Output
- External Alarm I/O
- Plug & Play with **PixelMaster NVR**
- Outdoor Mini Dome IP66 rated
- Indoor Mini Dome has 2 IR LEDs

Models	ZN-MD221M	ZN-MD243M	ZN-MDI243M-IR	ZN-M2AF
Description	Outdoor Mini Dome		Indoor Mini Dome	Indoor Auto Focus Mini Camera with 5X Zoom
Resolution	1080p			
D/N	Digital Day/Night		True Day/Night	Digital Day/Night
Lens	2.1mm	4.3mm	4mm	5X zoom (5-25mm)
Power	PoE , UL Listed			
Dimensions	4.3"Ø x 2.7" H		5.1"Ø x 3" H	2"W x 1.9"H x 2.5" D

Outdoor Mini Dome is vandal-proof and has optional pendant (ZMA-MDPM1) and wall mount (WRM-1).

## IP Box Cameras

### PixelPro Indoor IP Box Cameras

- 1080p, 720p and VGA Models
- Compatible with Computar CS MT lenses
- 1/2.5" Progressive Scan CMOS
- Dual Streaming Video
- Analog BNC & DC Auto Iris Output
- External Alarm I/O
- Available preinstalled in iPak Kits
- Plug & Play with **PixelMaster NVR**

Models	ZN-C2M	ZN-C1M	ZN-C1
Resolution	1080p	720p	VGA
Performance	IR Cut Filter, True Day/Night		
Lens (not included)	CS mount / C mount with adapter		
Power	Triple Power - 12VDC / 24VAC / PoE - UL Listed		
Dimensions	2.5" W x 2.4" H x 3.2"D		

## Bullet IP Cameras

### PixelPro Outdoor IP Bullet Cameras

- 1080p and VGA
- Multiple lens options
- 1/2.8" Progressive Scan CMOS
- 42 IR LEDs / 18 IR LEDs (mini)
- Built-in Fan & Heater (MTP models)
- DPC (Defective Pixel Correction (1080p & 720p)
- Sunshield and mounting bracket included
- Service Monitor Output
- IP66 for all weather use
- Plug & Play with **PixelMaster NVR**

Models	ZN-MB243M	ZN-B2MTP	ZN-B1MTP	ZN-B1A
Resolution	1080p		720p	VGA
Performance	True Day/Night			
Lens	4.3mm	3-9mm with P-Iris		3.3-12mm
Zoom & Focus	Manual	<b>ProSet</b> remote zoom & focus		Manual
Power	PoE, UL Listed	24VAC / PoE, UL Listed		12VDC / 24VAC / PoE, UL Listed

All PixelPro Cameras are ONVIF Profile (S) compliant and include Setup and Recording Software.





Featuring **ProSet**  
remote zoom & focus

## Indoor IP Domes

### PixelPro Indoor IP Domes

- 1080p, 720p and VGA Models
- 3-9mm or 3.3-12mm Varifocal
- 1/2.8" Progressive Scan CMOS
- DPC (Defective Pixel Correction)
- Service Monitor Output
- External Alarm I/O
- IR Model with 18 LEDs
- Plug & Play with **PixelMaster NVR**

Models	ZN-D2MTP-*	ZN-D1MTP-*	ZN-D1A
Resolution	1080p	720p	VGA
Day/Night Performance	IR Cut Filter, True Day/Night		
Lens	3-9mm Varifocal with P-Iris		3.3-12mm Varifocal
Remote Zoom & Focus	<b>ProSet</b> remote zoom & focus		Manual
Power	Triple Power - 12VDC / 24VAC / PoE, UL Listed		
Dimensions	4.5" H x 4.9"Ø		
Indoor IR Model	add "-IR" for IR model	add "-IR" for IR model	-

Flush Mount  
ZC-FM3A



Pendant Mount  
ZC7-PM1  
(3/4" NPT Pipe)



Wall Mount  
ZC7-WM1



## Outdoor IP Domes

### PixelPro Outdoor IP Domes

- 1080p, 720p and VGA Models
- 3-9mm or 3.3-12mm Varifocal
- 1/2.8" Progressive Scan CMOS
- DPC (Defective Pixel Correction)
- Service Monitor Output
- External Alarm I/O
- IR Model with 18 LEDs
- Optional heater available
- IP66 rated for all weather use
- Plug & Play with **PixelMaster NVR**

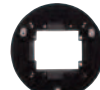


Featuring **ProSet**  
remote zoom & focus

Models	ZN-DT2MTP-*	ZN-DT1MTP-*	ZN-DT1A
Resolution	1080p	720p	VGA
Day/Night Performance	IR Cut Filter, True Day/Night		
Lens	3-9mm Varifocal with P-Iris		3.3-12mm Varifocal
Zoom & Focus	<b>ProSet</b> remote zoom & focus		Manual
Power	Triple Power - 12VDC / 24VAC / PoE, UL Listed		
Dimensions	4.8" (H) x 5.7"Ø		
Outdoor IR Model	add "-IR" for IR model	add "-IR" for IR model	-



Wall Mount  
ZNA-WM2A



45 Box  
Adapter  
ZCA-GAP



Pendant Mount  
ZNA-CA1  
(1 1/2" NPT Pipe)



Heater  
ZNA-HD2

All PixelPro Cameras are ONVIF Profile (S) compliant and include Setup and Recording Software.

# NETWORK VIDEO DEVICES

## IP PTZ and Cloud Cameras



ZCL1 shown with optional  
IR Illuminator - ZCL1-IR

## Ganz Cloud

### Indoor IP Video Camera with Online Video Management

#### Camera Model- ZCL1

- No local server or network configuration required
- Automatically connects to the Ganz Cloud Service (required) & begins capturing video
- H.264, True Day/Night with Ultra Wide Dynamic Range imager (up to 110 db)
- Intelligent, object based motion detection
- MicroSD card storage with patented bandwidth shaping (2GB card included)
- Encryption and signing protects images with strong stream based encryption
- Camera software is automatically maintained by the Ganz Cloud service (required)
- High end video management functionality from any browser or mobile device

Model	ZCL1
Compression	H.264
Resolution	720 (H) x 480 (V) with HDR CMOS Sensor
Lens	F1.8 4X Varifocal
Power	PoE
Dimensions	3.6" W x 1.9" H x 7" D
Camera + 12 Month Service Plan	ZCLS-12 (ZCL1 + ZCLS-12)
Optional	IR Illuminator - ZCL1-IR, Housing Bracket HP-GCAB

#### Requirements:

- Valid subscription to **Ganz Cloud Service Plan - ZCLS-12**
- Internet connection for streaming - 350~500kbps upload bandwidth
- Power over Ethernet (Class 2)
- Monitoring through Ganz Cloud desktop client requires Flash v10 or above

## IP PTZ HD Domes

### Fully-Programmable Vandal Resistant PTZ Domes

- True Day/Night (retractable IR cut filter)
- 127 preset positions (4 pattern, 8 swing, 8 group functions)
- Supports audio
- Pelco P & D Protocol
- Pendant, wall and flush mount options
- 720p model with 18x optical zoom provides HD images
- Designed for use with GanzVision and Ganz ZNS Series software
- IP66 rated outdoor models include sunshield and wall mount



Wall mount standard on outdoor models.  
Pole mount and corner adapter also available.

See online catalog for details.



Models	PT110-IP	PT127XT-IP
Type	Indoor - True Day/Night	Outdoor IP66 - True Day/Night
Compression	H.264 / MPEG-4 / M-JPEG	
Resolution	D1	
Zoom	10x optical / 12x digital	27x optical / 12x digital
Mount	Flush, pendant & wall mounts (optional)	Wall mount included
Power	12VDC / 1.3A	12VDC / 3.0A
Dimensions	5.8"Ø x 5.6" H	7.3"Ø x 7.6" H



## GANZ 6 ZNS SERIES



ZNS Series accepts video streams from Network cameras of more than 90 manufacturers. Go to our website for the complete and up-to-date list of ZNS Supported cameras.

## GanzVision

### NVR Software

- Intuitive user interface requires little to no training
- Simple and cost-effective to add additional IP camera licenses
- GanzVision archiving allows the use of network storage
- Audit Trail - allows search, view or export system actions performed by a system user
- Digital PTZ functionality on all cameras in live and recorded mode
- Easy-to-use, powerful video and audio export features
- Drag and drop cameras between monitors with the multi-monitor client display
- Thumbnail search enables immediate visual assessment & quick video search
- Graphical search display for all cameras and recorded audio
- View, search and playback video via Web & GanzVision Mobile app
- Multi-camera playback (up to 16)
- Compatible with industry's latest IP cameras and encoders (see website for list)

Models	GV-IP01	GVH-1608	GVH-3208	GV-IP01-WO
Single Camera License	16 Ch Analog 8 IP Licenses	32 Ch Analog 8 IP Licenses	Single Camera License	
Must be purchased preinstalled on a Ganz <b>ZNR Series Server</b> . See MSRP Price List or contact customer service for available options.				Purchased <b>without</b> Ganz Server

## GanzVision Start

### Value NVR Software

- The ease-of-use of GanzVision with all of the essential features for video surveillance
- Ideal for stand-alone IP and analog video surveillance needs. Up to 32 cameras (IP + analog) can be connected. Multiple users can be connected simultaneously
- Web Service compatible - view, search, and playback video via Web Browser & GanzVision Mobile app for iPhone, iPad & Android
- GanzVision Start is limited to a single server with up to 32 cameras (16 IP + 16 analog)
- Available preinstalled on Ganz ZNR Series servers

Model	Description
GV-ST-01	GanzVision Start - Single Camera License

## ZNS Series

### NVR Software

- E-mail notification in Event and Action management wizard
- AVI export (keep original & regular compression) with audio
- Client application audio notifications by alarm events
- Broadcast server archive playback
- Notification for lost camera signal
- Intuitive user interface requires little to no training
- Broadcast server allows for remote viewing from mobile devices
- Custom display layouts that can be sequenced and/or saved
- Comprehensive bandwidth throttling between server and client
- No maintenance fees and free software upgrades
- Full-featured local & remote playback with SMART Search

Models	ZNS-BASIC	ZNS-PRO	ZNS-ADVANCED	ZNS-ENTERPRISE
Max Cameras	4	9	16	**unlimited
Max Remote Clients	*1	*3	*5	**unlimited

\*Client software is free; limitation is for simultaneous users.  
\*\*Per Server; limitations based on hardware specs and network speed.

# ZNR Series

## NVR Servers

- Advanced Intel processors & chipset optimized for HD Video
- Servers are pre-installed with Windows 7 (other Windows OS available on request)
- Servers support all GANZ IP camera models
- IP & Hybrid server models 2U/4U (2TB-20TB), RAID-6 Lite (4TB-64TB), RAID-6 (12TB-84TB)
- Several preinstalled software options available



ZNR Server 4U



ZNR Server 2U



ZNR RAID-5 3U

IP NVR Server			Hybrid NVR Server			
Model	ZNR-2U	ZNR-4U	ZNR-HS-8	ZNR-HS-16	ZNR-HS-32	ZNR-HS-64
Server	Intel i7-4770 processor with 4GB RAM					
Capacity**	(+/-) 40 channels of IP cameras & DVD-RW	(+/-) 40 channels of IP cameras & DVD-RW	(+/-) 40 channels of IP cameras, 8 analog cameras & DVD-RW	(+/-) 40 channels of IP cameras, 16 analog cameras & DVD-RW	(+/-) 40 channels of IP cameras, 32 analog cameras & DVD-RW	(+/-) 40 channels of IP cameras, 64 analog cameras & DVD-RW
HDD	2TB - 20TB					
Size	2U	4U				
	Windows 7 Pro 64Bit (120G SSD)					
Dimensions	16.8"W x 25.6"D x 3.5"H	19"W x 21.5"D x 7" H				

\*\*Additional storage options available. See our online specifications or inquire with customer service.

RAID-6 Lite NVR Servers				RAID-6 NVR Servers		
Model	ZNR-**TB-RL (chassis size is determined by number of HDD)			ZNR-**TB-R (chassis size is determined by number of HDD)		
Server	Intel i7-4770 processor with 8GB RAM			(2) Intel Xeon e5-2630 - 6 Cores w/ 8GB of RAM		
Capacity***	(+) 40 channels of IP Cameras** & DVD-RW			(+) 74 channels of IP Cameras*** & DVD-RW		
HDD	6TB-15TB	18TB-36TB	39TB-84TB	12TB - 15TB	18TB - 42TB	32TB - 60TB
Size	3U - 8 bay	3U - 16 bay	4U - 24 bay	3U - 8 bay	3U - 16 bay	4U - 24 bay
Dim WxDxH	17 x 26 x 5.2"		17.2 x 26 x 7"	17 x 26 x 5.2"		17.1 x 27.5 x 7"

\*\*\*Capacity - IP camera capacity will fluctuate based on recording parameters. Also available in Hybrid Models. Call Technical Sales for details.

## ZNR Mini NVR Servers Preloaded with VMS Software

ZNR-MINIxx (i3)		ZNR-MINIxx (i5 )		ZNR-MINIi7-xx (i7)		
Server	Intel i3-4130 processor - 2GB RAM	Intel i5- 4570s processor - 4GB RAM		Intel i7-4770s processor - 4GB RAM		
Capacity**	(+/-) 40 channels of IP cameras & DVD-RW					
HDD	1TB, 2TB, 3TB, 4TB					
Size	Mini Tower/Desktop					
Windows OS	Windows 7 Pro 64Bit		Windows 7 Pro 64Bit (120G SSD )			
Dimensions	3.9"W x 13.3" D x 10.2" H					
Hybrid Options	ZNR-HS8-MINIi3-xx	ZNR-HS16-MINIi3-xx	ZNR-HS8-MINIi5-xx	ZNR-HS16-MINIi5-xx	ZNR-HS8-MINIi7-xx	ZNR-HS16-MINIi7-xx

A 16 channel Hybrid option is also available. Call Technical Sales for details.



ZNR-Mini Server



ZNR-Client PC

## ZNR Client PC

Model	ZNR-Client
Server	Intel i7-4770 processor with 8GB RAM
Capacity**	(2) 128 Bit/1GB video cards with Quad (VGA/DVI)/dual (HDMI) monitor out
HDD	2TB
Size	Mid-Size Tower
Windows OS	Windows 7 Pro 64Bit
Dimensions	7.8"W x 18.5" D x 16.8" H

Available pre-loaded with your choice of industry-leading NVR software solutions including:



\*Software sold separately (page 17) unless indicated. Go to [www.computarganz.com](http://www.computarganz.com) for compatible accessories.





## PIXEL MASTER Series Embedded NVRs

- 1080p recording
- Efficient H.264 compression
- Video access via web & mobile devices
- Built-in PoE switching HUB
- Automatic router port forwarding
- Full HD GUI
- Monitoring for fan failure & temperature
- HDD failure notification (S.M.A.R.T)
- Available in preinstalled in wall mount lockbox with monitor, fans and power

### 4 & 8 Channel H.264 HD 1080p Embedded NVRs

Models	NR4HL-2TB	NR4HL-4TB	NR8HL-2TB	NR8HL-4TB
HDD	2TB HDD	4TB HDD	2TB HDD	4TB HDD
Display	HD 1080p 120 FPS		HD 1080p 240 FPS	
Input	4 IP Camera (max 1080p)		8 IP Camera (max 1080p)	
Recording Speed	up to 30 FPS at 1080p			
Recording Resolution	1080p, 720p, 704x480, 352x240			
Power	12V Adaptor for NVR, 48V Adaptor for PoE			
Dimensions	12" W x 11.7" D x 1.7" H			
Optional	Rack Mount - NR-RM1			

**Ganz PixelPro**  
Simply Plug and Play  
PixelPro IP Cameras with no  
configuration required!



The NR16H features an external  
8-channel PoE Extension Hub



### PRO 8 & 16 Channel H.264 HD 1080p Embedded NVRs

PRO Models	NR8H	NR16H
HDD	3TB-15TB	
Display	HD 1080p 240 FPS	HD 1080p 480 FPS
Input	8 IP Cameras (max 1080p)	16 IP Cameras (max 1080p)
Recording Speed	up to 30 FPS at 1080p	
Recording Resolution	1080p, 720p, D1, CIF	
Power	12V Adaptor for NVR, 48V Adaptor for PoE	
Dimensions	16.9" W x 14.2" D x 3.5" H	
Optional	Rack Mount - NR-RM2, Under Counter Security Bracket - NR816-SBU	

## GanzView

### Mobile Surveillance App for DigiMaster H.264 DVRs & PixelMaster NVRs

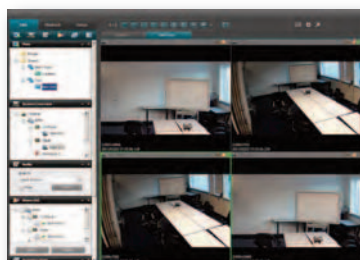
- Provides single channel or 4-channel access via live video streaming
- Allows monitoring, PTZ control (DVR only) & playback from DigiMaster H.264 DVRs and PixelMaster to your iPhone, iPad or Android smartphone
- Compatible with iPhone 4 and later, iPad and Android smartphones
- GanzView Lite also available (free version with live view only)
- Available iTunes and Google Play (free)



## DMS Lite

### Client Software for DigiMaster DVRs, PixelPro Cameras & Embedded NVRs

- Provides remote live & playback views of DigiMaster DVRs, PixelPro cameras and PixelMaster Embedded NVRs
- The user-friendly and intuitive GUI has the ability to handle alarms & audio
- Built in device discovery tool
- Screen layouts can be configured in either 4:3 or 16:9 formats
- Multi monitor support with an additional single channel float view



DMS Lite Live View

## DIGIMASTER



Includes remote, USB mouse, USB flash drive & DVD writer



Includes remote, USB mouse and USB flash drive

## DIGIMASTER Value Series

### 4, 8 and 16 Channel Real-Time Value H.264 DVRs

- Efficient H.264 compression
- 120 ips (4ch), 240 ips (8 ch) & 480 ips (16 ch) recording
- Remote access via web browser, DMS software & mobile devices
- Remote access via network / LAN

Models	DR4HL-500 - 4 Ch	DR8HV-500 - 8 Ch	DR16HV-1TB -16 Ch
HDD	500 GB HDD		1TB HDD
Video Input	4 BNC, VGA*	8 BNC, DVI*	16 BNC, DVI*
Ch / Recording Speed	4 Ch / 120 ips	8 ch / 240 ips	16 ch / 480 ips
Recording Resolution	704 x 480 (D1), 704 x 240 (2 CIF), 352 x 240 (CIF)		
Archiving	via USB flash drive	via CD / DVD Writer or USB Drive	
DVD Writer	-	Standard	
Power	12VDC adaptor, 5A, 100~220VAC, 50~60Hz		
Dimensions (W x D x H)	11.4" x 8.7" x 2.3"	14.2"W x 14.2"D x 2.6"H (1.5U)	

## DIGIMASTER HD Series

### 4, 8 and 16 Channel Real-Time H.264 DVRs

- 16 ch up to 8TB HDD, 8 ch up to 4TB HDD and 4 ch up to 2TB HDD
- 480 ips (16 ch) / 240 ips (8 ch & 4 ch) real-time recording
- Pentaplex Operation - simultaneous Live / Record / Playback / Archive / Network
- Remote access via web browser, DMS software and mobile devices
- HDMI output supports 1280 x 1024 display resolution (8 & 16 ch models)
- Archive to CD, DVD, USB drive or direct to HDD
- Instant playback via quick access menu

Models	DR4HD-* (4 Channel)	DR8HD-* (8 Channel)	DR16HD-* (16 Channel)
HDD	500GB, 1TB, 2TB	1TB, 2TB, 4TB	1TB, 2TB, 4TB, 6TB, 8TB
Video Input	4 BNC, VGA*	8 BNC, VGA, HDMI*	16 BNC, VGA, HDMI*
Recording Speed	240 ips		480 ips
Recording Resolution	up to 704 x 480 (D1)		
Power	12VDC/5A	100VAC-240VAC, 60/50Hz	
Dimensions (W x D x H)	14.2" x 14.8" x 2.6"	16.9" x 16.8" x 3.5"	

## DIGIMASTER HRD Series

### 16 Channel Real-Time H.264 D1 DVRs

- 16 channel D1 recording up to 480FPS
- Dual streaming up to 480FPS @ CIF
- 1080p HD display resolution
- 4x digital spot (single and quad screen support)
- 16 channel real-time playback
- HDMI, VGA, composite output (selectable)
- Full HD GUI
- Remote access via web browser, DMS software and mobile devices
- DVD writer, USB, remote standard

Models	DR16HRD-* (2TB, 4TB, 6TB & 8TB HDD models available)
Video Input	16 BNC, VGA, HDMI*
Recording Speed	480 FPS at D1
Recording Resolution	D1, 2CIF, CIF
Power	100VAC-240VAC, 60/50Hz
Dimensions (W x D x H)	16.9" x 16.8" x 3.5"

\*Go to our online catalog for additional DIGIMASTER video input/output, specifications and optional accessories.





## ZM-L27

### High Resolution Color LED Monitor

- 1080p resolution
- 16:9 HD widescreen format
- BNC, VGA and HDMI
- Low power consumption
- Standard VESA mount
- Optional wall and ceiling mounts

Model	ZM-L27
Size	27"
Resolution	1920 X 1080
Inputs	BNC 1/1, HDMI, VGA
Power	12VDC
Dimensions	25.5"W x 15.4"H x 1.9" D



## LED Series

### High Resolution 1080p Color LED Monitors

- 1080p resolution
- 16:9 HD widescreen format
- HDMI and DVI input
- Low power consumption
- Standard VESA mount
- Optional wall and ceiling mounts

Models	ZM-L22	LED-22
Size	21.5"	
Resolution	1920 X 1080	
Inputs	HDMI, BNC 1/1, VGA, PC stereo	HDMI, DVI, AV Audio (HDMI)
Power	12VDC	12VDC/100-240VAC
Dimensions	21.3"W x 12.5"H x 2.4"D	20.3"W x 15.6"H x 1.8"D



## LCD Series

### High Resolution Color LCD Monitors

- 10", 17" and 19" models
- Commercial grade components
- BNC and VGA video inputs
- HDMI input on 17" and 19" models
- Stereo audio input
- Optional wall, pole & rack mounts

Models	ZM-L19A	ZM-L17A	ZM-L10A
Size	19"	17"	10"
Resolution	1280 x 1024		1024 x 768
Inputs	BNC, HDMI, VGA, PC Stereo		BNC, VGA, Audio
Power	12VDC		
Dimensions W x H x D	16.6" W 16.5" H 6.7" D	15.2" W 15.3" H 6.7" D	9.3" W 8.3" H 1.7" D



## Value Series

### 17" and 19" LCD Value Monitors

- 1280 x 1024 resolution
- VGA input (no audio)
- Thin, professional design
- Life-like color performance
- Ultra fast response time
- Vibrant 1000:1 contrast ratio

Models	LCD-19	LCD-17
Size	19"	17"
Resolution	1280 x 1024	
Input	VGA	
Power	12VDC	100-240VAC
Dimensions	16" W 15.9" H 8.1" D	14.4" W 15.1" H 7.8" D

Go to our online catalog for additional monitors and mounting accessories.

# PRO-PAK HOUSINGS & CAMERA KITS

Pre-Assembled Outdoor Camera Kits with Power & Video Cables



HWB-1, HWB-2 & HWB-4  
Pro-Pak Housing Kits



Open view of housing



Shown with optional IR  
Illuminator & bracket

## Pro-Pak Kits

### Pro-Pak Housing with Camera and Lens

Pro-Pak Kits include a housing and wall bracket with a pre-assembled GANZ® camera and **computar**® varifocal lens. Pro-Pak kits can be ordered with a variety of Day/Night cameras with manual or auto-iris varifocal lenses. All lenses are backfocused & five feet of outdoor rated power & video cable included.

## HWB-1, HWB-2 & HWB-4

### Outdoor Housing with Wall Brackets

Compact, attractive design for indoor or outdoor use. Slide-off cover provides full accessibility to camera. Optional sunshield (SS-1), ceiling bracket (JB-1), and pole mount adapter (PMA2).

Models	HWB-1 Pro-Pak housing HWB-2 Pro-Pak housing with heater HWB-4 Pro-Pak housing with heater and blower
Dimensions	11.6" L x 3.7" Ø (window 2.6" Ø)
Maximum Camera & Lens Size	6.8" L x 3.2" W x 3.1" H
Weight	2.6 lbs (without camera & lens)
Operating Temperature	0° F ~ 122° F (no heater) / -40° F ~ 131° F (heater & sunshield)
Heater & Blower Power Supply	24 VAC / 10W (heater), 24 VAC / 11W (heater & blower)
Construction	UV Protected Powder Coated Aluminum Body, Front & Rear Caps UV Protected Silicone Seals; Glass Window for HD Optical Clarity
Enclosure Protection	Designed to NEMA-4, IP65

## Pro-Pak Camera & Lens Options

### Pro-Pak Day/Night and WDR Camera Options

YCX-05\*  
Digital Day/Night  
Digital WDR



YCX-05W\*  
Digital Day/Night  
True WDR



YCX-05N\*  
True Day/Night  
Digital WDR



YCX-05WN\*  
True Day/Night  
True WDR



YCB-08  
Digital Day/Night  
Digital WDR



\*The high performance **YCX Series** features Ganz **GX5** technology, combining 700 TVL, WDR performance, intelligent image enhancement and advanced OSD controls. See Page 5 or go online for detailed specifications

### Manual and Auto Iris Lens Options

**computar**  
2.9-8.2mm  
1/3" CS-MT F1.0  
Manual Iris  
DC Auto-Iris  
Manual Iris **IR**  
DC Auto-Iris **IR**



**computar**  
2.8-12mm  
1/3" CS-MT F1.3  
Manual Iris **IR**  
DC Auto-Iris **IR**



**computar**  
8.5-40mm  
1/3" CS-MT F1.3  
Manual Iris **IR**  
DC Auto-Iris **IR**



**computar**  
5-50mm  
1/3" CS-MT F1.3  
Manual Iris  
DC Auto-Iris



Additional camera and lens options available. Call customer service or go to [www.computarganz.com](http://www.computarganz.com) for more information.

# IPAK HOUSINGS & CAMERA KITS

Pre-Assembled Outdoor IP Camera Kits with Power & Ethernet Cables



## iPak for **GANZ** *PixelPro*

### iPak Housing with H.264 IP Camera and Lens

PixelPro iPak Kits include a housing and wall bracket with a pre-assembled GANZ® IP camera and **computar**® lens. iPak kits can be ordered in a variety of True Day/Night camera and lens combinations. Five feet of prewired outdoor rated power and Ethernet cables are included.

- Pre-assembled kit with optional 24VAC heater
- Pre-wired power & Ethernet cables included
- Feed-through mounting bracket conceals cables
- Minimal set-up reduces installation time
- Multiple mounting options available
- Optional ceiling bracket & sunshield available
- 24VAC power input
- IP65 rated aluminum housing suitable for all weather conditions



iPak inside view



Optional IR Illuminator. See page 24.  
(shown with optional bracket IRL-PB-2)

Models	HWB-1	HWB-2
Description	iPak Housing	iPak Housing with Heater
Maximum Camera & Lens Size	6.8" L x 3.2" W x 3.1" H	
Construction	UV Protected Powder Coated Aluminum Body, Front & Rear Caps UV Protected Silicone Seals; Glass Window for HD Optical Clarity	
Camera Mounting	Removable bracket with two screws	
Finish	Off-white	
Dimensions	11.6" L x 3.7" Ø (window 2.6" Ø)	
Weight	2.6 lbs (without camera & lens)	
Operating Temperature	0° F ~ 122° F	-40° F ~ 131° F
Enclosure Protection	Designed to NEMA-4, IP65	
Heater Power Supply	no heater	24 VAC / 10W
Optional Accessories	Sunshield (SS-1), Ceiling Bracket (JB-1), Pole Mount Adapter (PMA2)	

## Lens Options

### **HD** **MEGAPIXEL** **IR** Lenses

1/2.7" Format 12.5-50mm  
A4Z1214CS-MPIR  
AG4Z1214FCS-MPIR  
AG4Z1214KCS-MPIR

1/2.7" Format 3.1-8mm  
A3Z3112CS-MPIR  
AG3Z3112FCS-MPIR  
AG3Z3112KCS-MPIR



- 3 Megapixel Varifocal
- Full HD Format
- Precise Focus Adjustment
- IR Corrected Optics
- Corner Brightness
- Manual, DC Auto and P-Iris Models

### **HD 5.0** **MEGAPIXEL** **IR** Lenses

1/1.8" Format 4.5-13.2mm  
E3Z4518CS-MPIR  
Manual Iris



See our online catalog for additional iPak camera and lens combinations.



## ACCESSORIES

Power, Mounting and Viewing Accessories

### IR Illuminators

Outdoor IR LED and White Light Illuminators



#### IR LED Series

- 10°, 30°, 60° and 120° beam angles
- Up to 623 ft. of superior IR lighting
- Long bulb life & low power consumption
- Use with Pro-Pak & iPak kits (see pg.18)

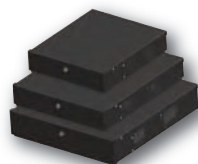
#### White Light Series

- 10°, 30°, 60° and 120° beam angles
- Up to 220' of superior visible lighting
- Provide a 400-750nm visible spectrum
- Use with Pro-Pak & iPak kits (see pg.18)



### Lock Boxes

Multiple 24 VAC Indoor Master Power Supplies



- Built-in 115V fan
- 17", 21" and 24" models
- Security cam lock
- Multiple cable access
- Rugged steel with black powder coat finish
- Optional Wall Mounting Bracket Kit

### Video Stabilizer

Single Channel Video Stabilizer



ZS-STB1000

- Single channel
- Eliminates unwanted camera movement
- Best suited for high zoom applications
- Simple to Install (Plug and Play)
- Analog Video in to Analog Video Out
- Advanced Automatic Algorithm

### Service Monitor

Portable 3.5" Color Service Monitor with Re-chargeable Battery



#### ZM-L35T

- 3.5" LCD screen
- Measures 20~250 VAC & 0~45 VDC
- Pelco P & D protocol for PTZ testing
- 0~2Vpp video level measurement
- Open or short circuit cable test feature
- Built-in speaker for audio testing

### PTZ Controllers

Joystick Controllers PTZ Cameras



#### SC101

- 3 Axis PTZ control
- Ability to access camera's OSD menu
- Pelco P & D Protocol

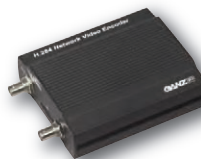
#### ZCA-SC201

- Preset positions & pattern control
- Joystick control for PTZ functions
- User-friendly interface in LCD displ



### Video Server

Single Channel H.264 Video Server



ZN-S1000VNE

- Single channel
- Intelligent video motion detection
- RS485 PTZ and Digital I/O
- 12VDC & PoE
- Optional video content analytics
- Compatible with **PixelPro GXi** Series

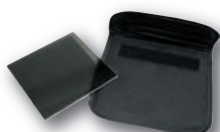
## Installation & Power Supplies

Camera Mounting  
Brackets



CMB Series

Back Focusing Neutral  
Density Filter



CBF-1

Viewfinder  
Lens Selector



VM300

12VDC & 24VAC  
Power Supplies



C24AC  
C24AC-40

C12DCR-500

Multiple 24 VAC Indoor  
Master Power Supplies



PS Series



## Varifocal Lenses

**computar**® Varifocal Lenses offer three different options of iris control: manual iris, auto iris DC drive and auto iris video drive. **computar**® aspherical IR varifocal lenses - Day/Night lenses, are the ideal solution for low light and/or where infrared illumination is used. These lenses are suitable for all Day/Night, color and monochrome cameras. IR lenses are used with True Day/Night cameras. All **computar**® varifocal lenses offer the maximum flexibility as they can be adjusted to match the exact scene required by the end user. Once obtained, view can be fixed by using the lens locking screws. **computar**® offers one of the largest ranges of varifocal lenses from 1.8mm (almost fisheye) to 50mm for close up views.

Focal Length	Manual Iris	DC Auto Iris	Video Auto Iris	IR	F Stop	Angle of View (HOR)	Format	Mount
1.8-3.6mm	T2Z1816CS	TG2Z1816FCS	TG2Z1816AFCS		1.6	144.2° ~ 79.4°	1/3"	CS
2.8-12mm	T4Z2813CS-IR	TG4Z2813FCS-IR	TG4Z2813AFCS-IR	✓	1.3*	102.2° ~ 23.7°	1/3"	CS
2.9-8.2mm	T3Z2910CS	TG3Z2910FCS	TG3Z2910AFCS		1.0**	98.3° ~ 35.2°	1/3"	CS
2.9-8.2mm	T3Z2910CS-IR	TG3Z2910FCS-IR	TG3Z2910AFCS-IR	✓	1.0**	98.3° ~ 35.2°	1/3"	CS
4.5-12.5mm	H3Z4512CS-IR	HG3Z4512FCS-IR	HG3Z4512AFCS-IR	✓	1.2*	83.7° ~ 30.1°	1/2"	CS
8.5-40mm	T5Z8513CS-IR	TG5Z8513FCS-IR	TG5Z8513AFCS-IR	✓	1.3*	33.5° ~ 7.1°	1/3"	CS
5-50mm	T10Z0513CS	TG10Z0513FCS	TG10Z0513AFCS		1.3*	51.8° ~ 5.6°	1/3"	CS

\*Aspherical lens - improves the image quality \*\*Large aperture - transmits more light



**HD 5.0 computar**  
**MEGAPIXEL IR Lenses**

- 1/1.8" Format
- 5 MP IR / Full HD Format
- 4.5-13.2mm
- Precise Focus Adjustment
- IR Corrected Optics
- Manual Iris

## Varifocal/Megapixel Lenses

Focal Length	Manual Iris	DC Auto Iris	Megapixel	IR	F Stop	Angle of View (HOR)	Format	Mount
2.8-12mm	-	TG4Z2816FCS-MPIR	1.3	✓	1.6	102.2° ~ 23.7°	1/3"	CS
3.1-8mm	A3Z3112CS-MPIR	AG3Z3112FCS-MPIR	3.0	✓	1.2	105.4° ~ 42.2°	1/2.7"	CS
4-8mm	H2Z0414C-MP	HG2Z0414FC-MP	1.3		1.4	90.4° ~ 47.0°	1/2"	C
4.5-13.2mm	E3Z4518CS-MPIR	-	5.0	✓	1.8	105.3° ~ 35.3°	1/1.8"	CS
12.5-50mm	A4Z1214CS-MPIR	AG4Z1214FCS-MPIR	3.0	✓	1.4	26.3° ~ 6.7°	1/2.7"	CS
12-36mm	M3Z1228C-MP	MG3Z1228FC-MP	1.3		2.8	41.0° ~ 13.6°	2/3"	C
25-135mm	H5Z2518C-MP	HG5Z2518FC-MP	3.0		1.8	14.5° ~ 2.8°	1/2"	C

## 5 Megapixel ITS Lenses

- 9mm-50mm models
- Compatible with CMOSIS "CMV 2000" (35mm & 50mm)
- 35mm & 50mm IR models
- Manual, DC Auto, P-Iris models



Focal Length	Manual Iris	DC Auto Iris	P-Iris	MP	IR	F Stop	Angle of View (HOR)	Format	Mount
35mm	M3518FIC-MPIR	MG3518FC-MPIR	MG3518KC-MPIR	5.0	✓	1.8	13.9°	2/3"	C
50mm	M5020FIC-MPIR	MG5020FC-MPIR	MG5020KC-MPIR	5.0	✓	2.0	9.8°	2/3"	C
9mm	M0918FIC-MP	MG0918FC-MP	MG0918KC-MP	5.0		1.8	52.1°	2/3"	C
12mm	M1218FIC-MP	MG1218FC-MP	MG1218KC-MP	5.0		1.8	39.3°	2/3"	C
16mm	M1616FIC-MP	MG1616FC-MP	MG1616KC-MP	5.0		1.6	30.8°	2/3"	C
25mm	M2514FIC-MP	MG2514FC-MP	MG2514KC-MP	5.0		1.4	20.0°	2/3"	C

For a complete listing of **computar**® lenses - request our lens catalog or view online at [www.computar.com](http://www.computar.com).



---

**CBC (AMERICA) Corp.**

Corporate Headquarters  
55 Mall Drive  
Commack, NY 11725  
Tel: +1-800-422-6707  
Fax: +1-631-543-5426

West Coast Office  
21241 S Western Ave.  
Torrance, CA 90501  
Tel: +1-877-407-9555  
Fax: +1-310-787-0464

Mexico Branch Office  
Galileo No. 20 - 101, Col. Polanco,  
Miguel Hidalgo, 11560, Mexico DF  
Tel : +52 55 5280 4660  
Fax : +52 55 5280 3073

---

[www.computarganz.com](http://www.computarganz.com)



Scan to view mobile catalog

CBC reserves the right to modify product specifications without prior notice and assumes no responsibility for errors in this publication.  
All products mentioned in this publication are acknowledged to be the property of their respective trademark owners.